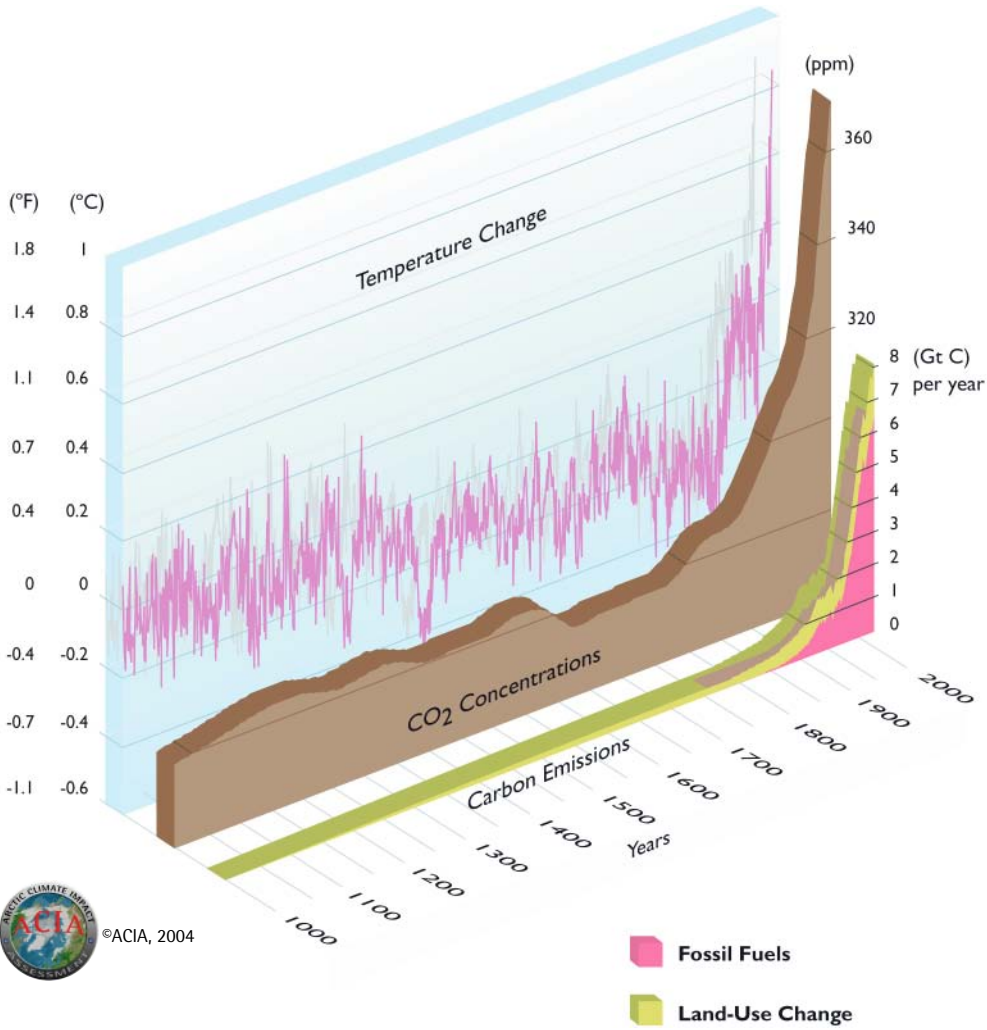
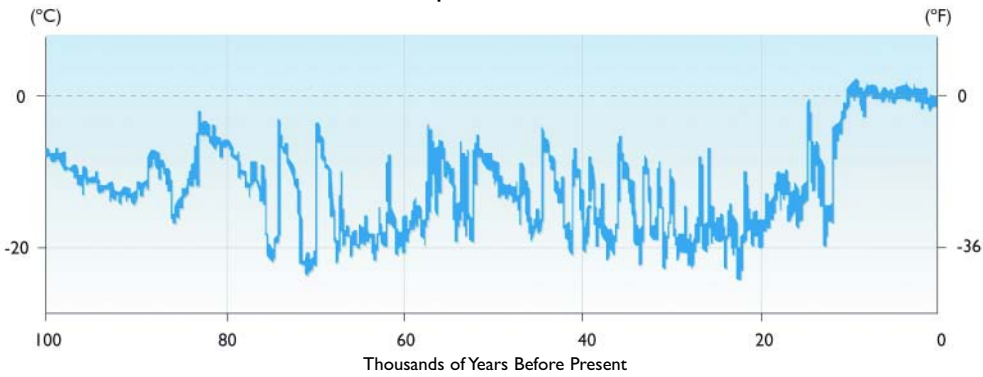


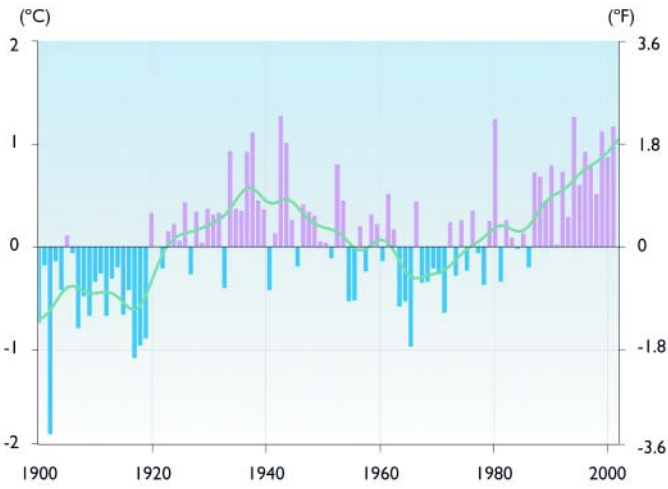
1000 Years of Changes in Carbon Emissions, CO₂ Concentrations and Temperature



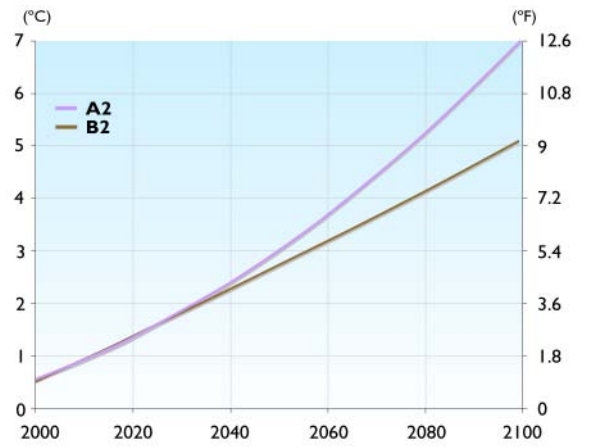
100 000 Years of Temperature Variation in Greenland



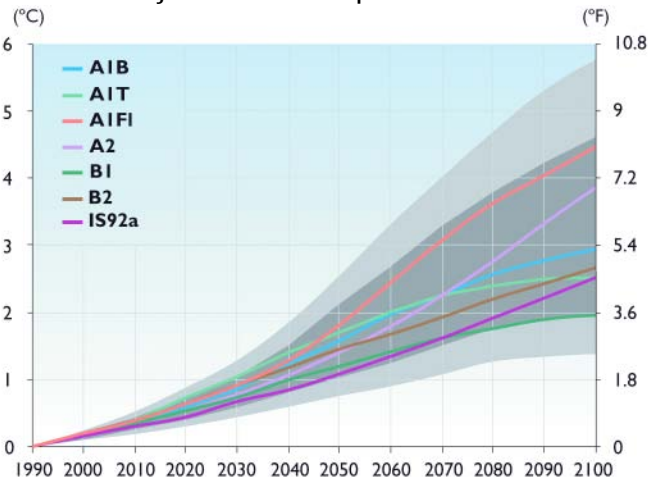
Observed Arctic Temperature, 1900 to Present



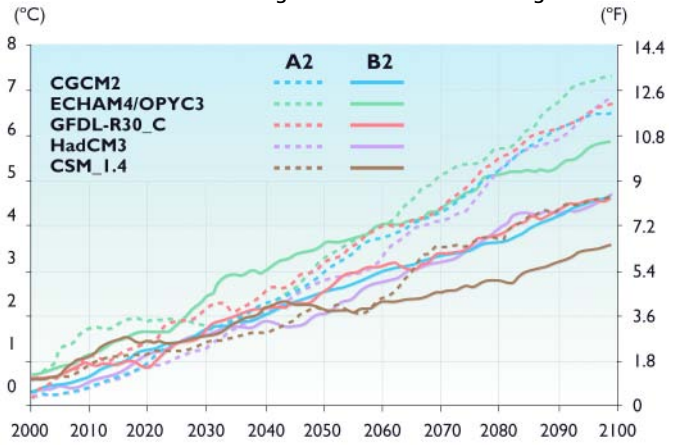
Projected Arctic Temperature Rise



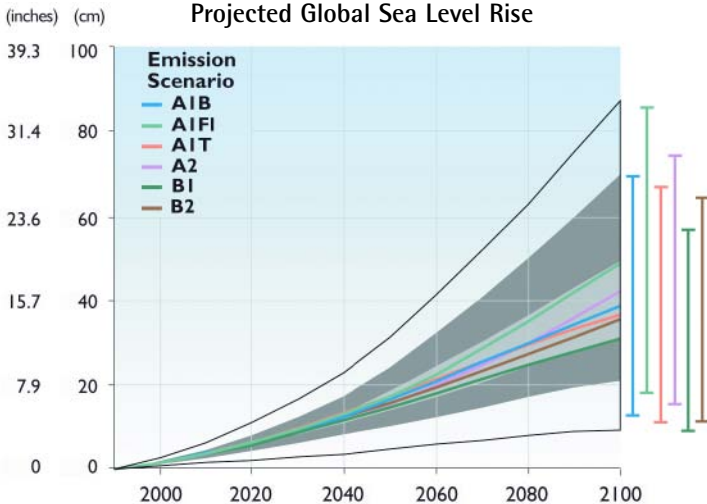
Projected Global Temperature Rise



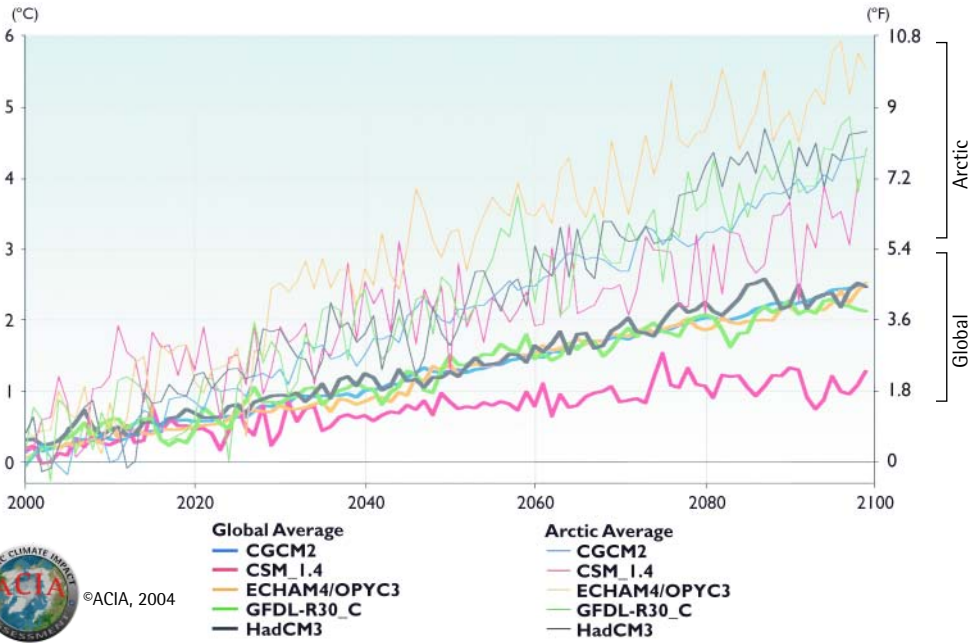
Projected Arctic Surface Air Temperatures 2000–2100 60°N – Pole: Change from 1981–2000 average



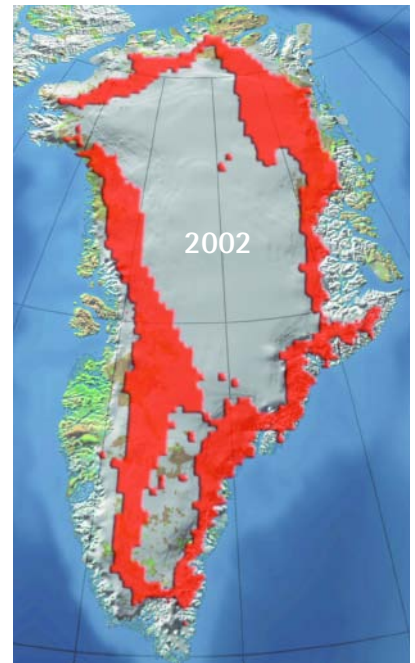
Projected Global Sea Level Rise



Projected Surface Air Temperature Change (change from 1981-2000 Average)

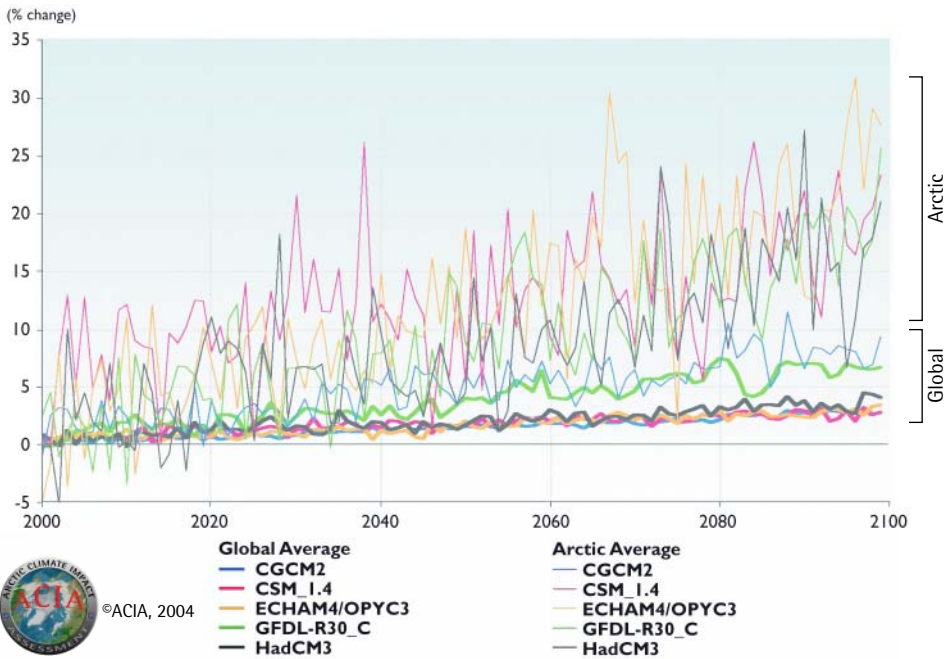


Greenland Ice Sheet Melt Extent



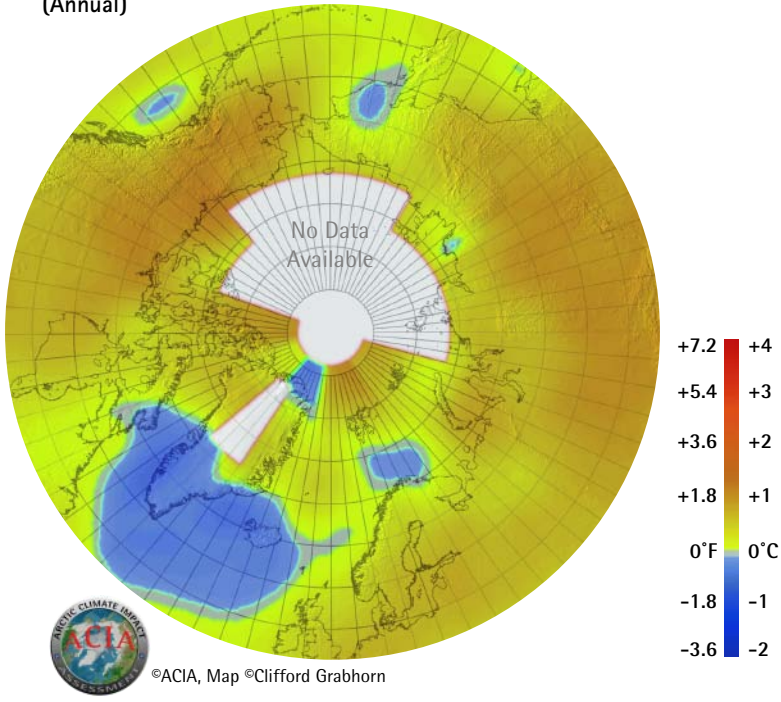
©ACIA, Map ©Clifford Grabhorn

Projected Precipitation Change (% change from 1981-2000 average)

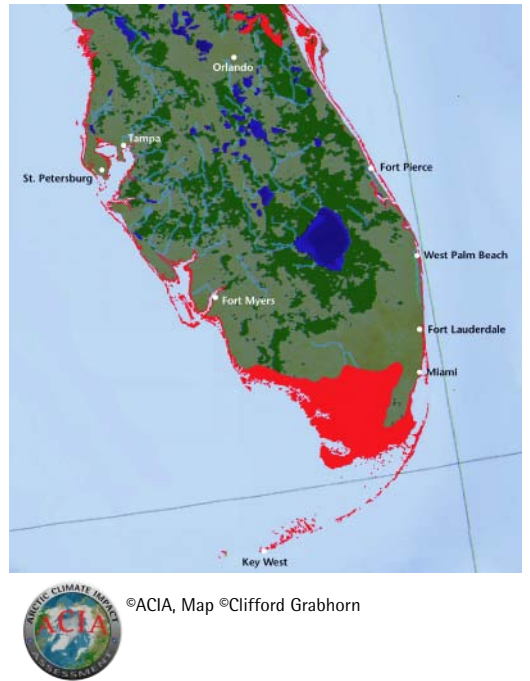


©ACIA, 2004

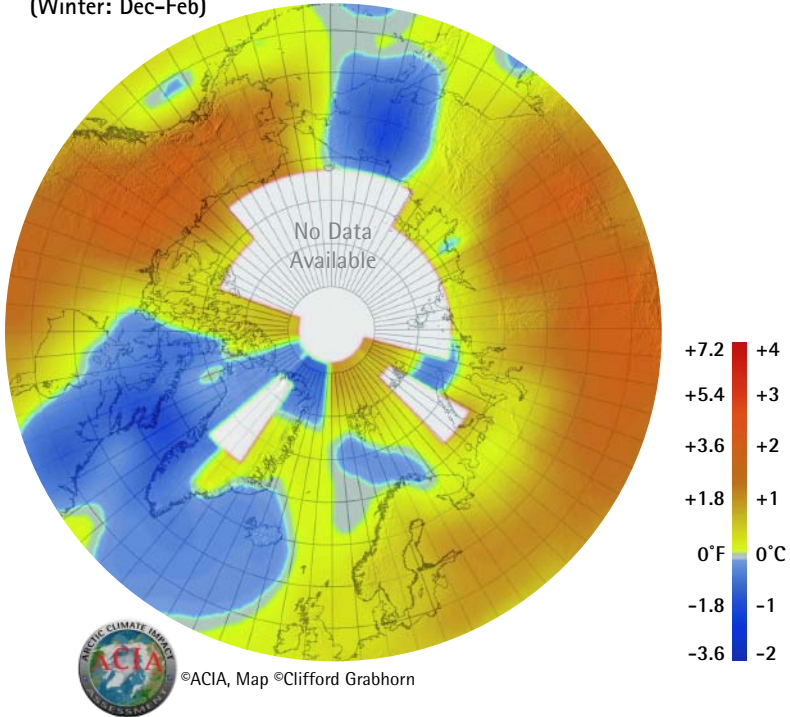
Observed Surface Air Temperature Changes: 1954 - 2003
(Annual)



Areas in Florida Subject to Inundation
with 100 Centimeter (3.3 ft) Sea Level Rise

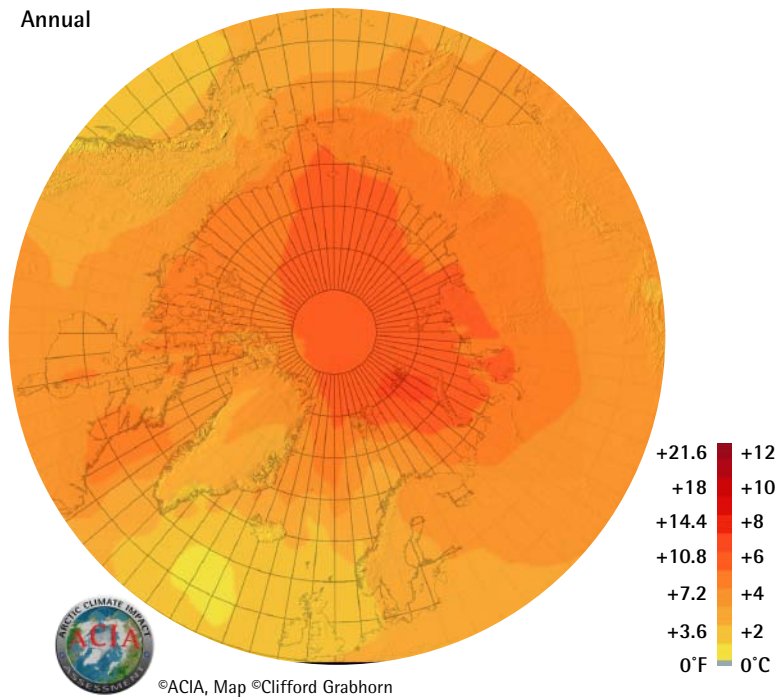


Observed Surface Air Temperature Changes: 1954 - 2003
(Winter: Dec-Feb)



Projected Surface Air Temperature Change: 1990s - 2090s

Annual



Projected Ice Extent (5-model average for September)

2010 - 2030



2040 - 2060

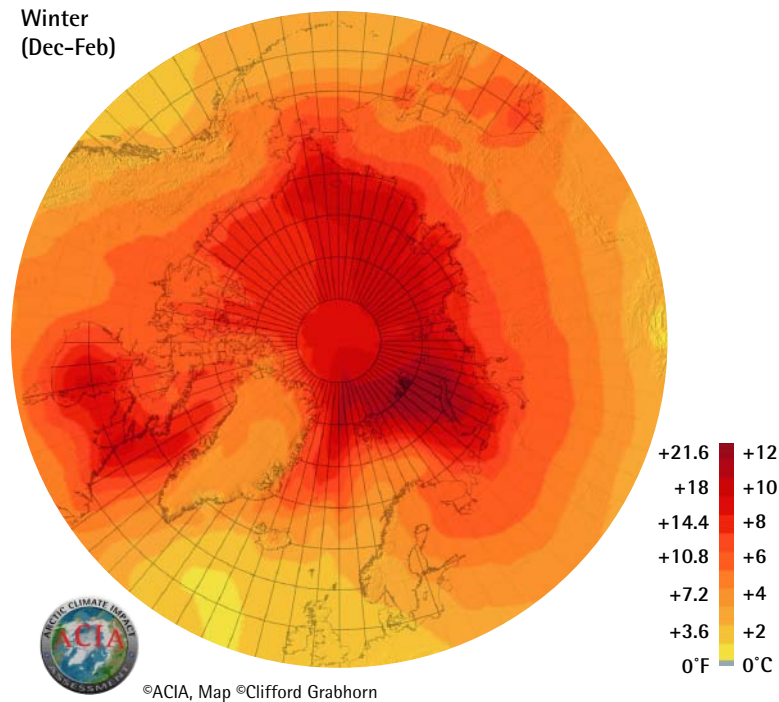


2070 - 2090



Projected Surface Air Temperature Change: 1990s - 2090s

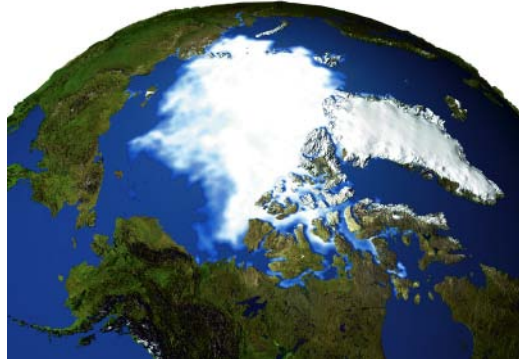
Winter (Dec-Feb)



Observed Sea Ice September 1979



Observed Sea Ice September 2003



Global Ocean Circulation

